

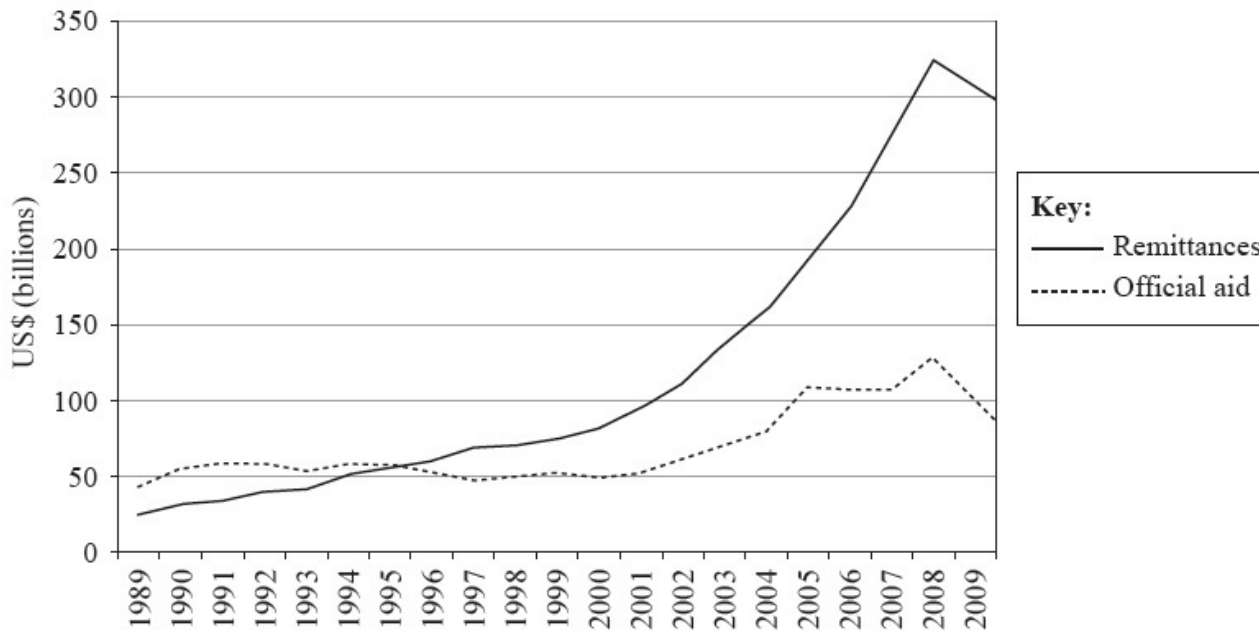
---

# HL Paper 1

“It is impossible to eliminate disparities in wealth and development.” Discuss this statement.

---

The graph shows migrants’ remittances and official aid to low and middle income countries, 1989–2009, in billions of US Dollars (USD).



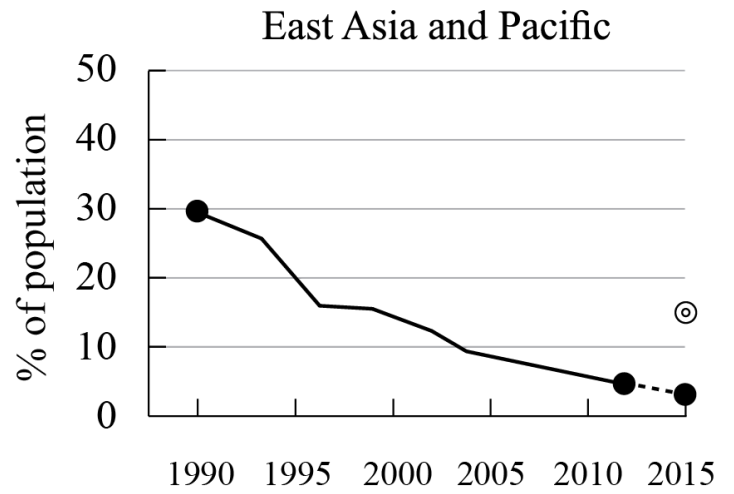
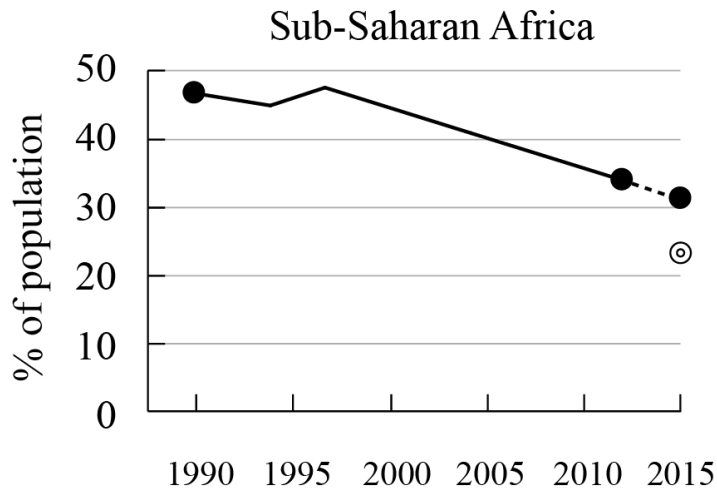
[Source: The World Bank, *World Bank Migration and Remittances Factbook 2011* (2011)]

- Define the term *remittances*. [2]
  - Referring to the graph, describe the trend in remittance flows since 1989. [3]
  - Suggest **three** reasons why international financial aid is **not** always effective. [6]
- 

“Migration reduces disparities in wealth and development.” Discuss this statement.

---

The graphs show the progress made towards Millennium Development Goal 1 (percentage of population living on less than US\$1 per day).



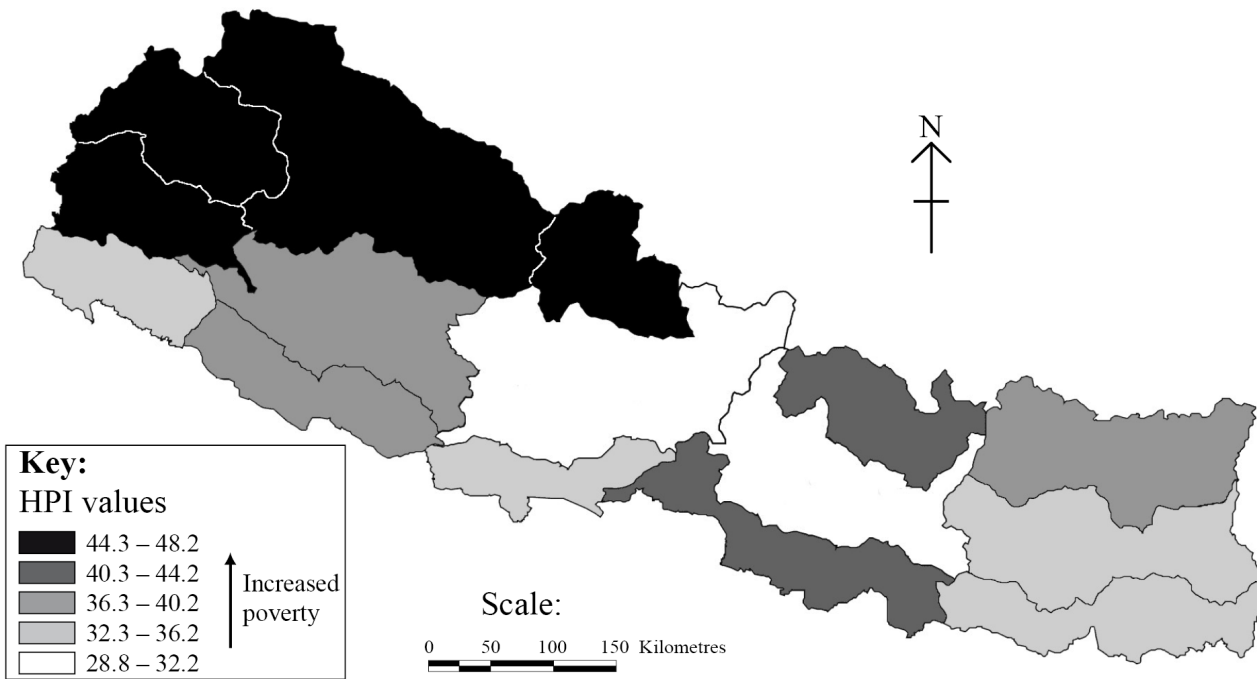
**Key:**

- Actual US \$ 1/day
- Projected US \$ 1/day  
2015 target

[Source: www.siteresources.worldbank.org]

- a. (i) State which region has met its target. [1+1]
- (ii) Identify the year when this region first met its target.
- b. Suggest **two** reasons why some regions may not meet their 2015 target. [2+2]
- c. Explain how increased trade and market access can sometimes help reduce disparities between countries. [5]

- a. The map shows the Human Poverty Index (HPI) of Nepal. [3]



[“Human Poverty Index across eco-development regions”, Nepal, 2006 United Nations Development Program (UNDP) (August 2009). UNDP Nepal, used with permission.]

Describe the pattern of human poverty shown on the map.

- b. Explain **one** strength and **one** weakness of using the Human Development Index (HDI) as a way of measuring disparities. [2+2]
- c. Explain the inequalities resulting from ethnicity in a named country. [4]

“The Millennium Development Goals (MDGs) are unlikely to be achieved without a dramatic increase in global energy consumption.” Discuss this statement.

- a. State the **three** components that are used to calculate the Human Development Index. [3]
- b. Referring to examples, describe **two** factors that result in inequities within countries. [2x2]
- c. Explain how trade and access to markets may reduce disparities. [5]

“The Millennium Development Goals (MDGs) have **not** improved life for the world’s poorest people.” Discuss this statement.

Examine the view that rapid population growth will prevent some countries from meeting their Millennium Development Goals.

---

Discuss why some governments find it difficult to provide access to safe drinking water for all their people.

---

“Development does not always reduce social and economic disparities.” Discuss this statement, referring to examples.

---

To what extent do the most successful poverty reduction strategies focus on wealth creation and gender equality?

---

“A falling fertility rate is always beneficial to a country.” Discuss this statement.

---

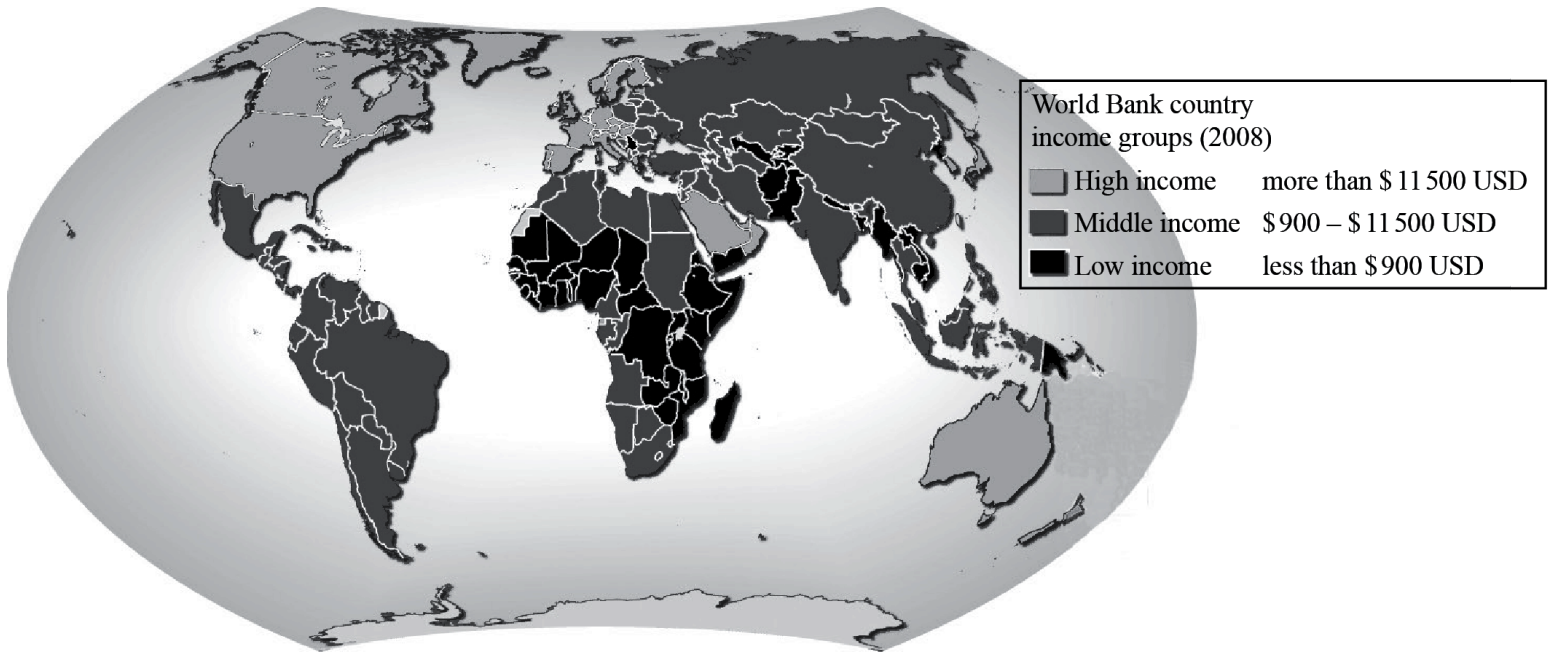
Discuss the main reasons why attempts to reduce socio-economic disparities sometimes fail.

---

“Investing in gender equality is the most effective strategy to promote economic and social development.” Discuss this statement.

---

The map shows the Gross National Income (GNI) per person for different countries in 2008.



[Source: <http://maps.grida.no/go/graphic/world-bank-country-income-groups>]

- Describe the global pattern of GNI per person shown on the map. [3]
- Suggest **two** reasons why GNI per person is not a reliable way of measuring global disparities. [2+2]
- Explain how debt relief may help to reduce global disparities. [5]

---

“Greater gender equality is the most effective way to reduce poverty and stimulate development.” Discuss this statement.

---

Examine the view that gender inequalities are a major obstacle to development.

---

Referring to **one or more** countries, discuss the view that internal (national) migration can help to reduce economic and social disparities.

---

Discuss the extent to which **two or more named** countries or regions have met their Millennium Development Goals (MDGs).

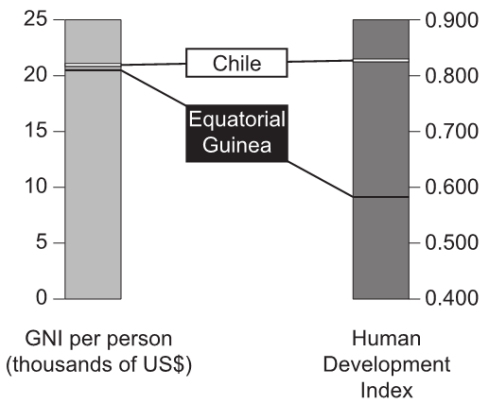
---

“Global climate change will increase disparities in development.” Discuss this statement, referring to examples.

“Poverty reduction cannot be achieved without improved soil management.” Discuss this statement.

“Trade is always more effective than aid in reducing global disparities.” Referring to examples, discuss this statement.

The graph shows the gross national income (GNI) per person and the Human Development Index (HDI) score for two countries in 2015.



[Source: 2015 Human Development Report ‘Work for Human Development’. Human Development Report Office, United Nations Development Programme. [http://hdr.undp.org/sites/default/files/2015\\_human\\_development\\_report.pdf](http://hdr.undp.org/sites/default/files/2015_human_development_report.pdf)]

a. Define the term *GNI* (per person). [2]

b. Using evidence from the graph, outline why Chile is more developed than Equatorial Guinea. [2]

c. Explain **two** reasons why countries with similar GNI per person can have very different HDI scores. [4]

Reason 1:

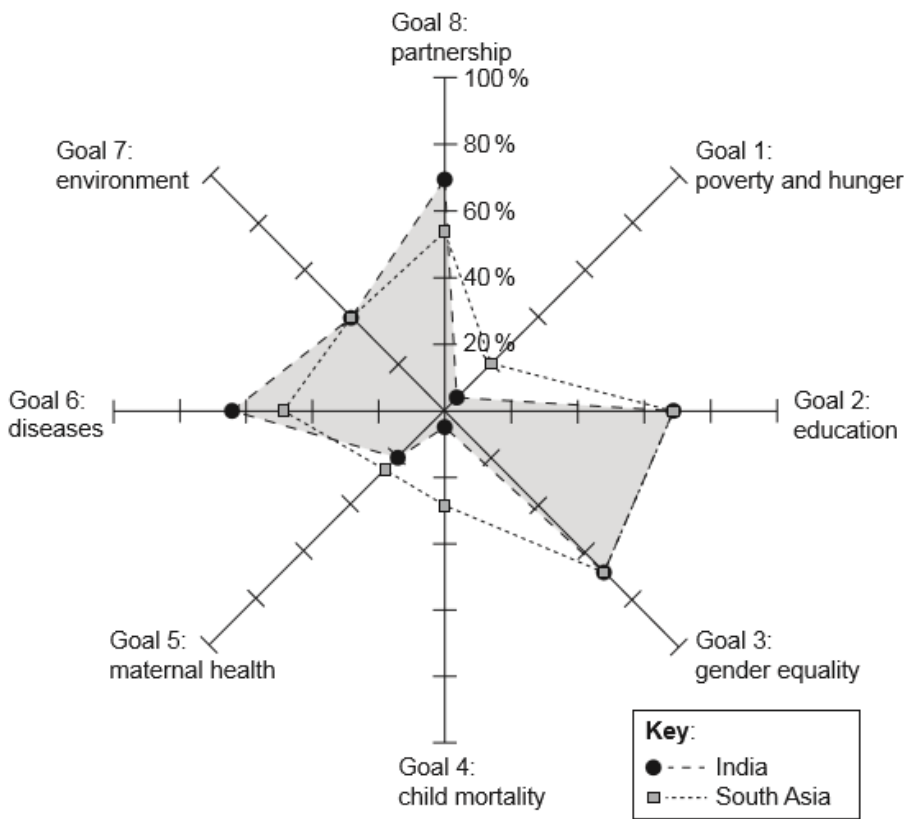
Reason 2:

d. Infant mortality rate is defined as the number of children who die before their first birthday per 1000 live births. Suggest **one** advantage **and one** [4] disadvantage of using infant mortality as a measure of socio-economic development.

Advantage:

Disadvantage:

The spider graph shows how far India has progressed towards meeting the Millennium Development Goals in 2012, compared to the average for all countries in South Asia. On this graph, 100 % shows that the Millennium Development Goal has been fully achieved.



(0% – off target, 100 % – completed on target)

[Source: adapted from [www.mdgtrack.org](http://www.mdgtrack.org)]

a. Identify the **two** goals towards which India had made more progress than South Asia in 2012. [2]

- 1.
- 2.

b. Suggest **two** reasons why some countries, such as India, still have high rates of child mortality. [4]

- 1.
- 2.

c. Explain **one** strength and **two** weaknesses of the Human Development Index as a way of measuring global disparities. [6]

Strength:

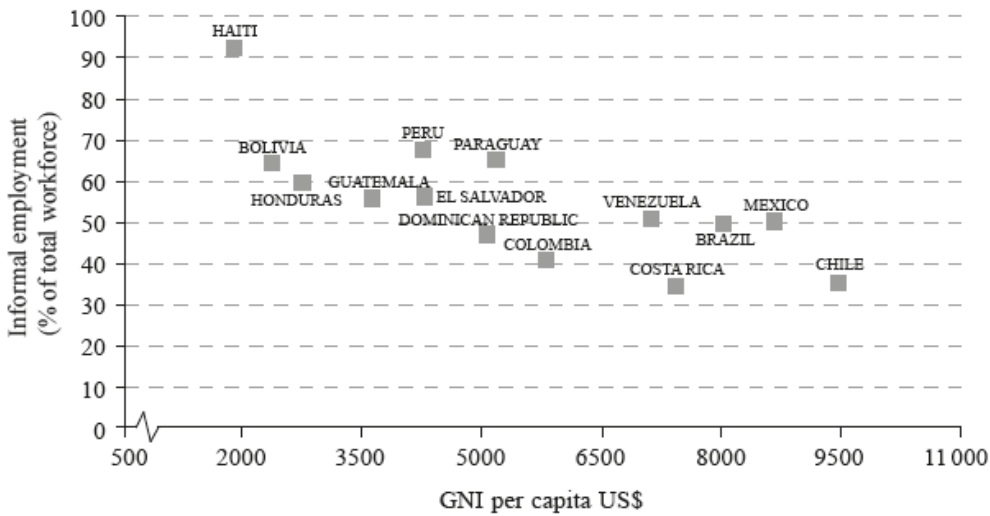
Weakness 1:

Weakness 2:

The third Millennium Development Goal is to “promote gender equality and empower women”. To what extent might international migration play a role in helping this goal to be achieved?

### Disparities in wealth and development

The graph below shows the relationship between GNI per capita in US\$ and the percentage of the workforce who work in informal employment, for a selection of Latin American countries in 2012.



[Source: adapted from [www.latameconomy.org](http://www.latameconomy.org)]

a. (i) Describe the relationship shown on the graph. [7]

(ii) Suggest **two** possible reasons for this relationship.

b. Briefly explain how debt relief can reduce global disparities. [4]

The graph shows how much money it costs to send US\$200 (USD) as a remittance from selected regions.





[Source: adapted from <http://digitalmoney.shiftthought.co.uk>]

a. Describe the trends in the cost of sending remittances from the three regions shown on the graph. [2]

b. Outline **one** possible reason why transferring remittances creates costs for foreign workers. [2]

c. Explain **two** reasons why remittances are often an effective way of reducing global disparities. [4]

Reason 1:

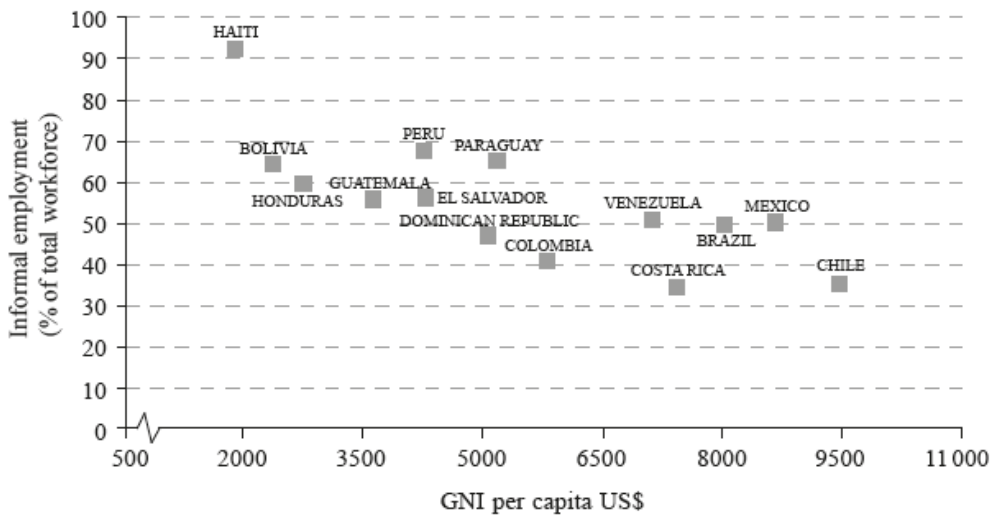
Reason 2:

d. Explain how inequalities can arise from ethnic differences in **one named** country. [4]

Named country:

### Disparities in wealth and development

The graph below shows the relationship between GNI per capita in US\$ and the percentage of the workforce who work in informal employment, for a selection of Latin American countries in 2012.

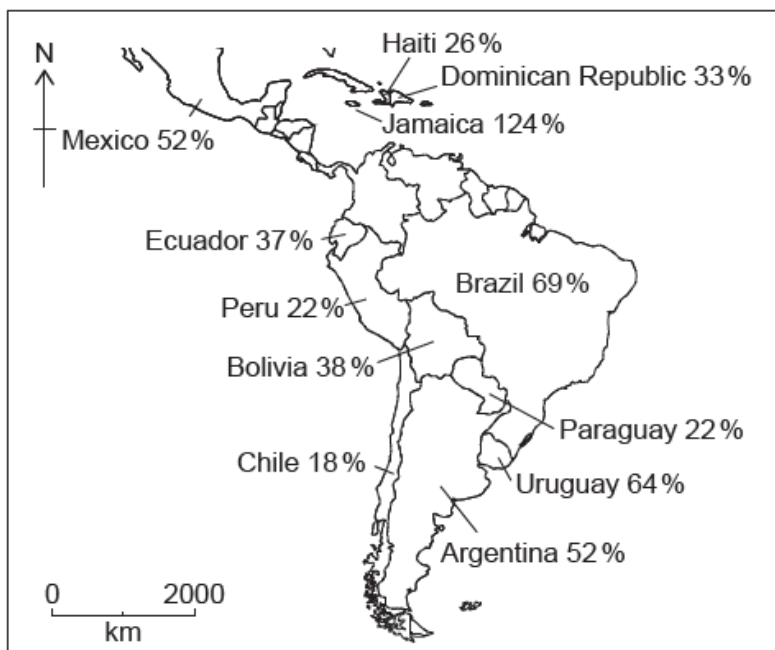


[Source: adapted from www.latameconomy.org]

- a. (i) Describe the relationship shown on the graph. [7]
- (ii) Suggest **two** possible reasons for this relationship.
- b. Suggest two reasons why developing regions have made good progress towards meeting the MDG to provide universal primary education. [2+2]
- c. Explain how progress in education can help regions advance towards meeting **one** other MDG (other than universal primary education). [5]

### Disparities in wealth and development

The map shows foreign debt as a percentage of gross national income (GNI) for a selection of countries in the Americas in 2015.



[Source: Courtesy of Stratfor Worldview, a geopolitical intelligence firm.]

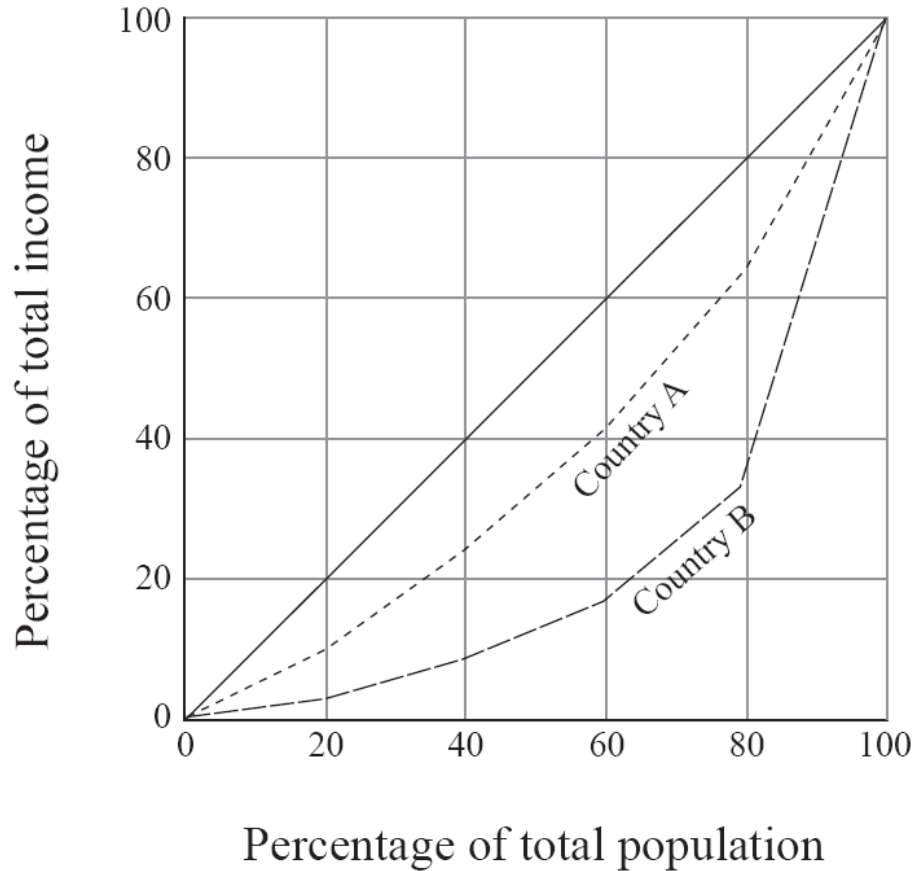
- a.i. Briefly outline what is meant by gross national income (GNI). [1]

a.ii. Briefly outline what is meant by foreign debt. [1]

b. Identify which country on the map is most in need of debt relief and briefly justify your choice. [3]

c. Explain, using examples, **two** ways in which increased trade may help reduce economic disparities between countries. [4]

The graph below shows the income distribution for two countries, A and B.



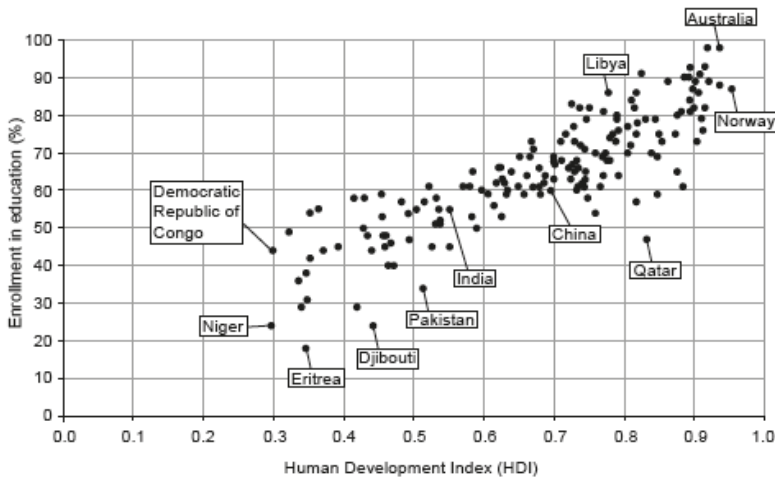
[Source: © World Bank. Used with permission.]

a. State which country, A or B, has a more **even** distribution of total income and give a reason for your choice. [3]

b. Suggest **two** reasons why an **uneven** distribution of income occurs within **one named** country or region. [4]

c. Explain **two** ways in which remittances can help reduce disparities in the migrants' country of origin. [4]

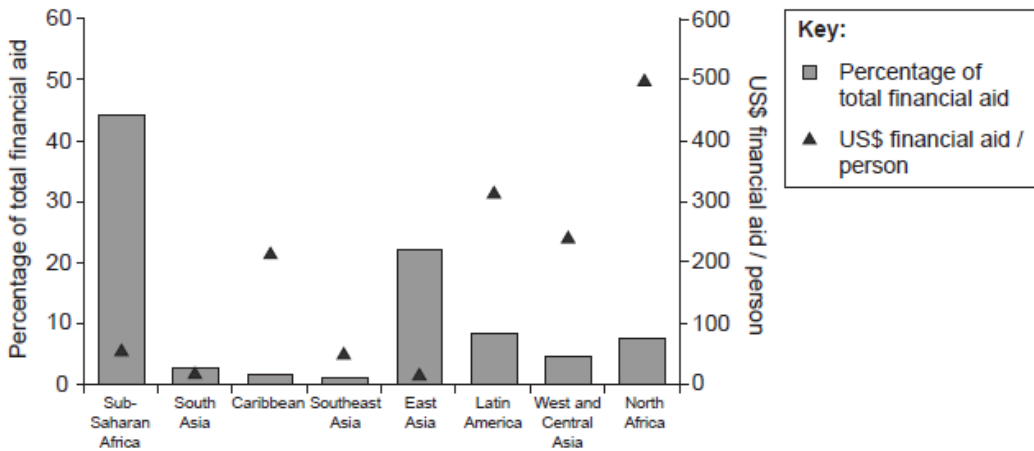
The graph shows the relationship between the Human Development Index (HDI) and enrollment in education (the number of students enrolled in education as a percentage of the population of school-going age).



[Source: Sourced from "Human Development Report 2014 'Sustaining Human Progress: Reducing Vulnerabilities and building resilience.' Human Development Report Office, United Nations Development Programme" and [hdr.undp.org](http://hdr.undp.org).]

- Describe the relationship shown on the graph. [2]
- State the **three** components that make up the Human Development Index (HDI). [2]
- Suggest **two** reasons why composite indices (such as the HDI) are used to measure global or regional disparities. [4]
- Explain **one** advantage **and** **one** disadvantage of using debt relief to reduce global disparities. [4]

The graph shows the percentage of total financial aid going to particular geographical regions and the actual amount in US dollars this equates to for a poor person (a person living on less than US\$1.25 a day) in 2010.

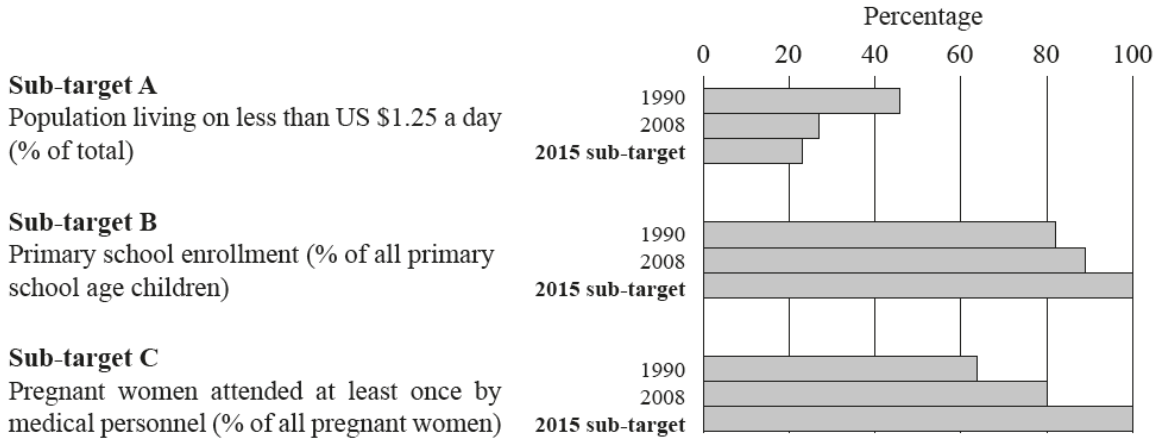


[Source: [www.un.org](http://www.un.org)]

- Describe how the **percentage of total financial aid** varies between the regions on the graph. [3]
- Suggest **two** reasons why poor people in Sub-Saharan Africa do not receive very much financial aid per person. [4]

**2. Disparities in wealth and development**

The graph shows the progress towards meeting three sub-targets of the 2015 Millennium Development Goals in developing countries.

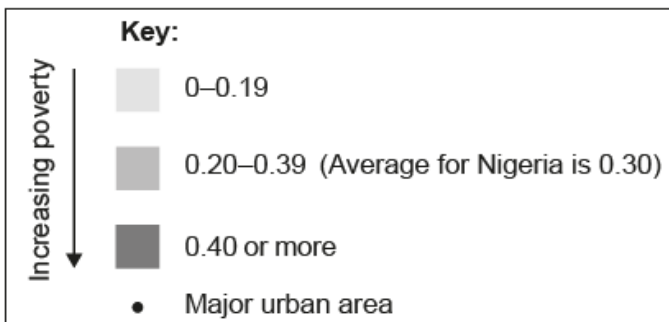
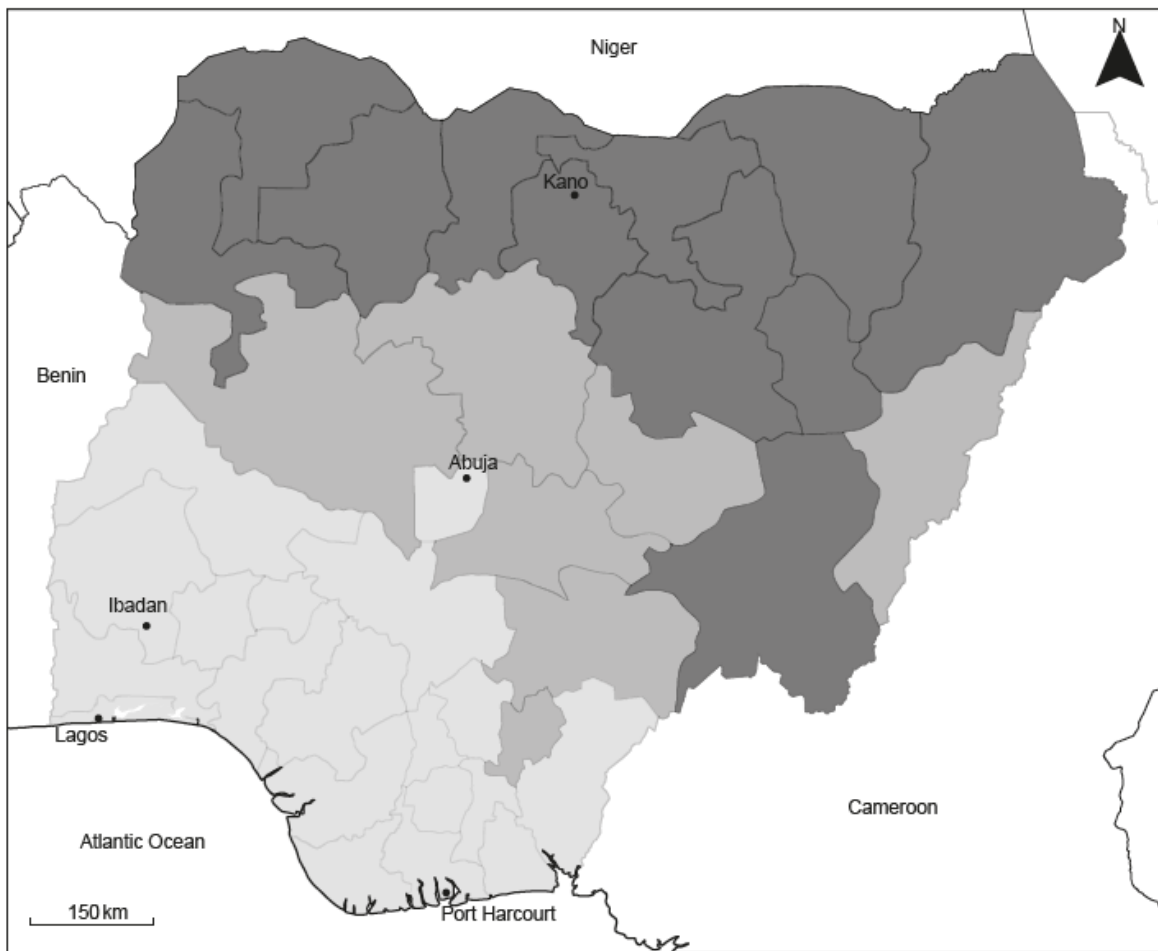


[Source: © The Economist Newspaper Limited, London (22 September 2010). Data sourced from the UN.]

- a. (i) With reference to the graph, identify which sub-target was furthest from being met in 2008. [2]
- (ii) State the Millennium Development Goal to which the sub-target you identified in part (i) relates.
- b. State any **two** other Millennium Development Goals that are **not** represented in these graphs. [2]
- c. Suggest **two** reasons why primary school enrollment as a percentage has increased. [4]
- d. Explain **two** reasons why aid may **not** help reduce disparities. [4]

The map shows how different regions within Nigeria score on the United Nations Development Programme's Multidimensional Poverty Index (MPI).

The higher the score, the greater the incidence of poverty.



[Source: Alkire, S., Conconi, A., Robles, G., and Seth, S. (2015). "Multidimensional Poverty Index, Winter 2014/2015: Brief Methodological Note and Results." OPHI Briefing 27, University of Oxford, January (<http://www.ophi.org.uk/methodological-note-mpi-winter-20142015/>).]

- a. Describe the pattern of poverty shown on the map. [3]
- b. Suggest **two** reasons why differences in poverty occur within countries. [4]
- c. Explain **two** positive outcomes of a strategy designed to reduce economic disparities within **one named** country. [4]